

# CAPITAL PARK AT WESTPORT

## LOCATION

Westport  
Montgomery, Alabama

## ACREAGE

170+/- Will subdivide

## DESCRIPTION

There is approximately 3800 feet of road frontage on US 31 which is being improved to provide 4-lane access to I-65. This property is generally rectangular and has a depth of 2300 feet. Exception includes 4-acre home site cut out.

## UTILITIES

All available.

## TRANSPORTATION

Air, rail, and interstate.

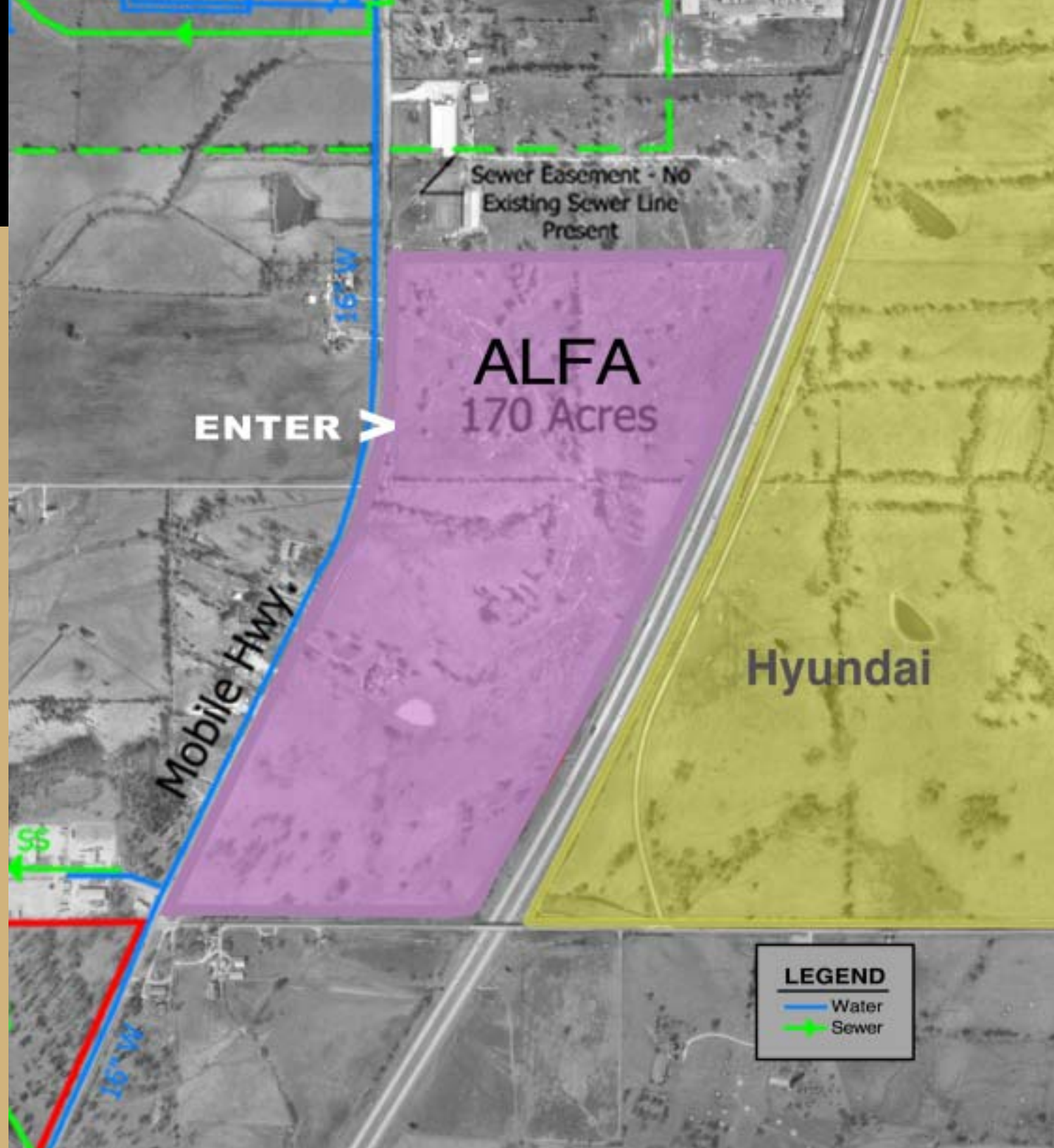


## MARKETED BY:

Alfa Realty Inc. Commercial Division  
4135 Carmichael Road, Suite 3500  
Montgomery, Alabama 36106

(334) 244-9333 / Fax: (334) 270-9888  
www.callalfa.com

*Aerial maps of land owned by Southern Boulevard Corporation.  
Information deemed reliable but not guaranteed.*



**LEGEND**

- Water
- Sewer